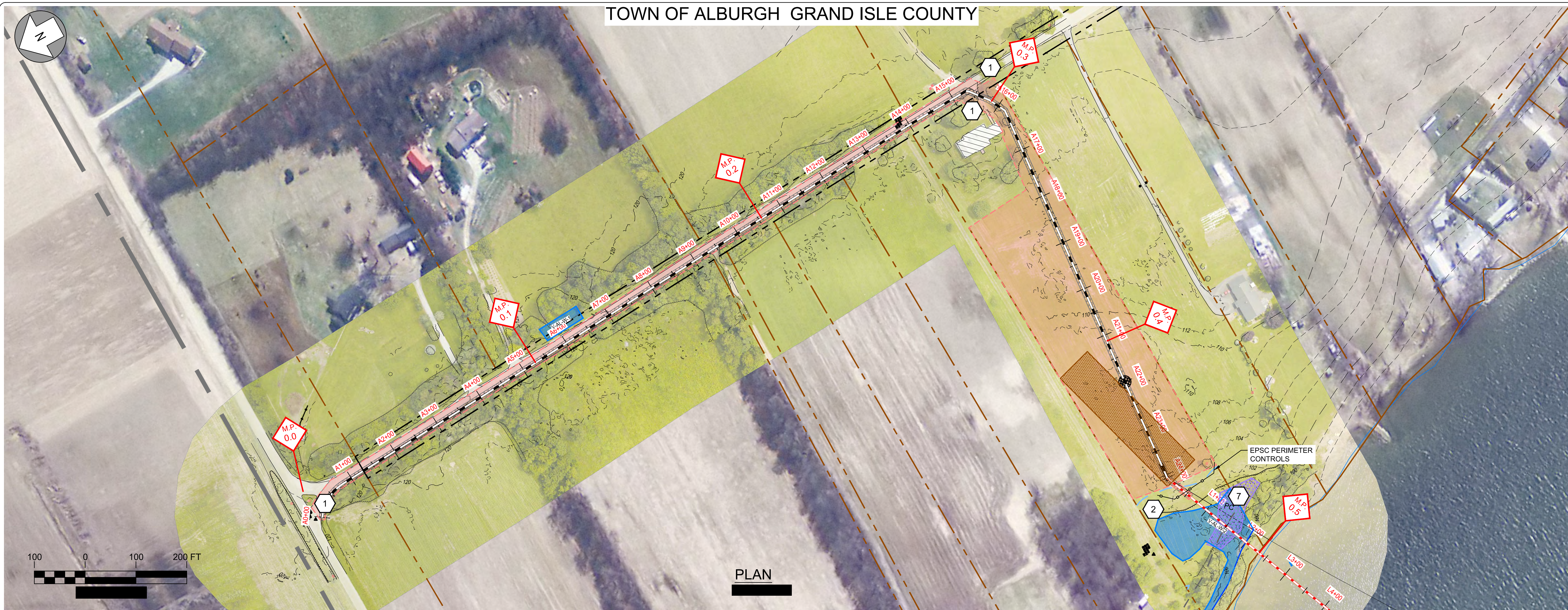


TOWN OF ALBURGH GRAND ISLE COUNTY

EPSC WORK NOTES

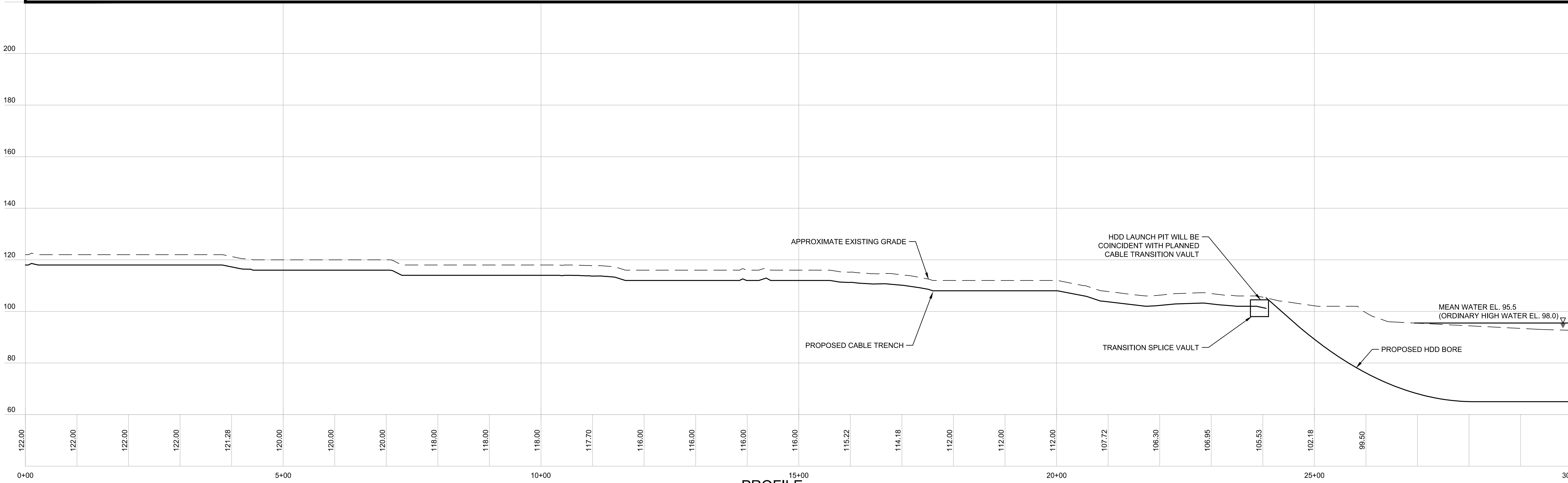
- 1 INSTALL STABILIZED CONSTRUCTION ENTRANCE. SEE TYPICAL DETAIL ON SHEET TD-7.
- 2 DEMARCATATE LIMIT OF DISTURBANCE AND INSTALL PERIMETER CONTROLS IN ACCORDANCE WITH GENERAL EPSC NOTES AND CONSTRUCTION METHOD TYPICAL DETAILS ON SHEETS G-5 AND CM-1 THRU CM-5.
- 3 WETLAND CROSSING. SEE "TYPICAL WETLAND CONSTRUCTION" ON SHEET TD-7.
- 4 OPEN TRENCH EXCAVATION OR AT-CULVERT STREAM CROSSING TO BE COMPLETED IN ACCORDANCE WITH TYPICAL DETAILS ON SHEETS TD-4 AND TD-5.
- 5 REPLACE STREAM CULVERT IN ACCORDANCE WITH TYPICAL DETAILS ON SHEETS TD-3 AND TD-4.
- 6 DEMARCATATE AND AVOID POTENTIAL ROOSTING TREE.
- 7 DEMARCATATE AND AVOID RTE POPULATION.
- 8 IMPLEMENT RTE PLANT PROTECTION PLAN.
- 9 IMPLEMENT RTE ANIMAL PROTECTION PLAN.



PLAN




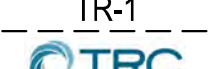
REFER TO SHEETS CM-1 THROUGH CM-5 FOR CONSTRUCTION METHOD DETAILS.



PROFILE

Designed	.
Drawn	.
Checked	.
Approved	.
Scale	AS NOTED

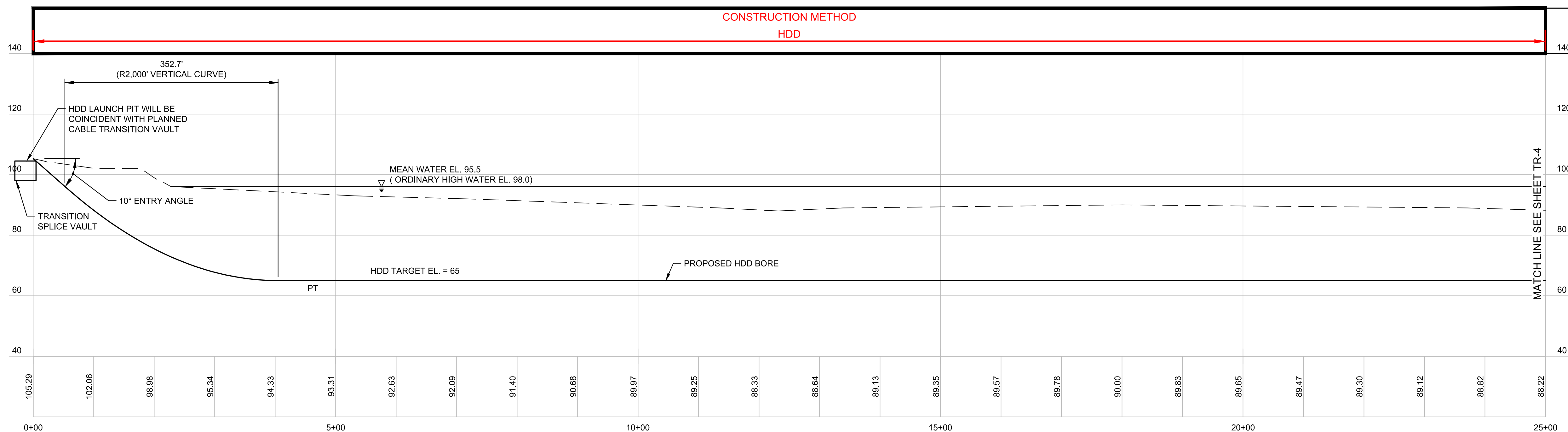
No.	Revision	Date	By	Ck	PE	PE #
A	20% ANR Submission	12/5/14	TRC	AMW		
B	EPSC & PERMITS IFCR	3/8/15	TRC	AMW		
C	ISSUED FOR USE	3/27/15	TRC	AMW		
D	ISSUED FOR PERMITTING	7/24/15	TRC	AMW		


NEW ENGLAND CLEAN POWER LINK
 TDI New England
 Plan & Profile - Overland Route - Alburgh
 Prepared by:  9/19/14

TOWN OF ALBURGH GRAND ISLE COUNTY

EPSC WORK NOTES

- 1 INSTALL STABILIZED CONSTRUCTION ENTRANCE. SEE TYPICAL DETAIL ON SHEET TD-7.
- 2 DEMARCATATE LIMIT OF DISTURBANCE AND INSTALL PERIMETER CONTROLS IN ACCORDANCE WITH GENERAL EPSC NOTES AND CONSTRUCTION METHOD TYPICAL DETAILS ON SHEETS G-5 AND CM-1 THRU CM-5.
- 3 WETLAND CROSSING. SEE "TYPICAL WETLAND CONSTRUCTION" ON SHEET TD-7.
- 4 OPEN TRENCH EXCAVATION OR AT-CULVERT STREAM CROSSING TO BE COMPLETED IN ACCORDANCE WITH TYPICAL DETAILS ON SHEETS TD-4 AND TD-5.
- 5 REPLACE STREAM CULVERT IN ACCORDANCE WITH TYPICAL DETAILS ON SHEETS TD-3 AND TD-4.
- 6 DEMARCATATE AND AVOID POTENTIAL ROOSTING TREE.
- 7 DEMARCATATE AND AVOID RTE POPULATION.
- 8 IMPLEMENT RTE PLANT PROTECTION PLAN.
- 9 IMPLEMENT RTE ANIMAL PROTECTION PLAN.



REFER TO SHEETS CM-1 THROUGH CM-5 FOR CONSTRUCTION METHOD DETAILS.

Designed	.
Drawn	.
Checked	.
Approved	.
Scale	AS NOTED

No.	Revision	Date	By	Ck	PE	PE #
A	20% ANR Submission	12/5/14	TRC	AMW		
B	EPSC & PERMITS IFCR	3/8/15	TRC	AMW		
C	ISSUED FOR USE	3/27/15	TRC	AMW		
D	ISSUED FOR PERMITTING	7/24/15	TRC	AMW		

TDI New England
TDI New England Corporation

NEW ENGLAND CLEAN POWER LINK
TDI New England

Plan & Profile - Overland/Lake Route
 Transition - Alburgh
 TR-3

Prepared by: **CTRC** 9/19/14

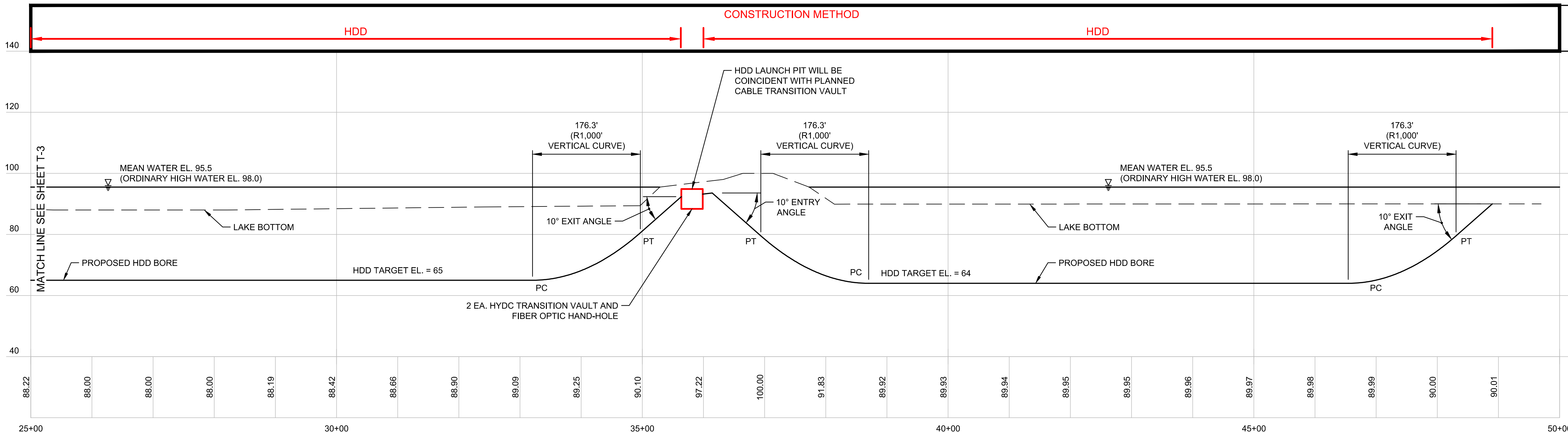
TOWN OF ALBURGH GRAND ISLE COUNTY

EPSC WORK NOTES

- 1 INSTALL STABILIZED CONSTRUCTION ENTRANCE. SEE TYPICAL DETAIL ON SHEET TD-7.
- 2 DEMARCATATE LIMIT OF DISTURBANCE AND INSTALL PERIMETER CONTROLS IN ACCORDANCE WITH GENERAL EPSC NOTES AND CONSTRUCTION METHOD TYPICAL DETAILS ON SHEETS G-5 AND CM-1 THRU CM-5.
- 3 WETLAND CROSSING. SEE "TYPICAL WETLAND CONSTRUCTION" ON SHEET TD-7.
- 4 OPEN TRENCH EXCAVATION OR AT-CULVERT STREAM CROSSING TO BE COMPLETED IN ACCORDANCE WITH TYPICAL DETAILS ON SHEETS TD-4 AND TD-5.
- 5 REPLACE STREAM CULVERT IN ACCORDANCE WITH TYPICAL DETAILS ON SHEETS TD-3 AND TD-4.
- 6 DEMARCATATE AND AVOID POTENTIAL ROOSTING TREE.
- 7 DEMARCATATE AND AVOID RTE POPULATION.
- 8 IMPLEMENT RTE PLANT PROTECTION PLAN.
- 9 IMPLEMENT RTE ANIMAL PROTECTION PLAN.



REFER TO SHEETS CM-1 THROUGH CM-5 FOR CONSTRUCTION METHOD DETAILS.



PROFILE

Designed	.
Drawn	.
Checked	.
Approved	.
Scale	AS NOTED

No.	Revision	Date	By	Ck	PE	PE #
A	20% ANR Submission	12/5/14	TRC	AMW		
B	EPSC & PERMITS IFCR	3/8/15	TRC	AMW		
C	ISSUED FOR USE	3/27/15	TRC	AMW		
D	ISSUED FOR PERMITTING	7/24/15	TRC	AMW		

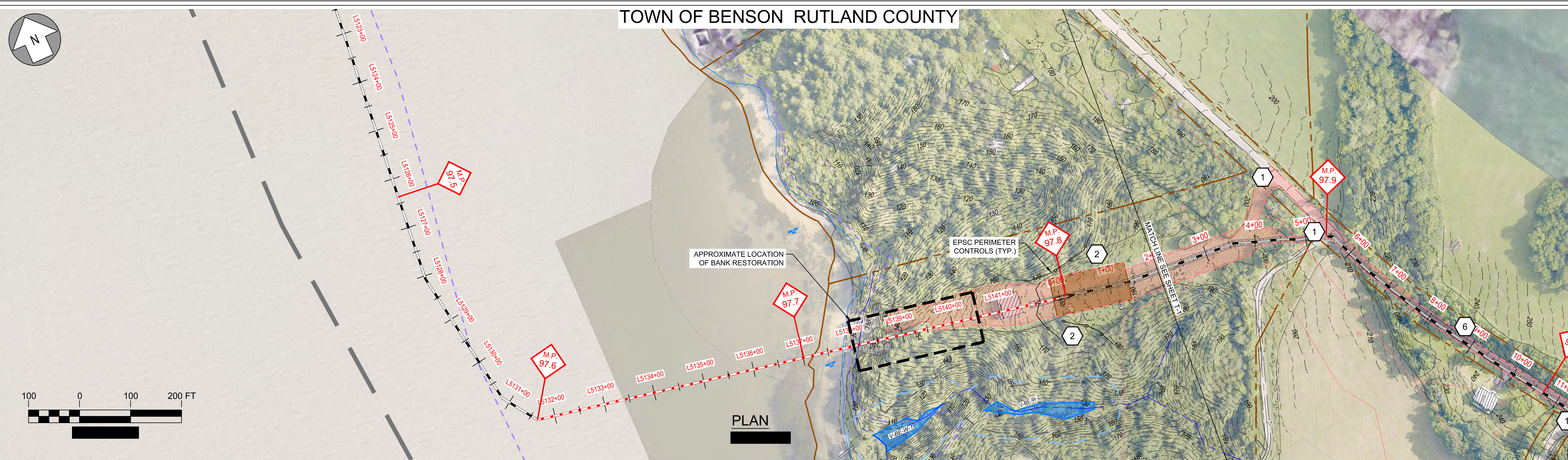
TDI New England
TDI New England Corporation

NEW ENGLAND CLEAN POWER LINK
TDI New England

Plan & Profile- Overland/Lake Route
 Transition - Causeway
 TR-4

Prepared by: **OTRC** 9/19/14

TOWN OF BENSON RUTLAND COUNTY



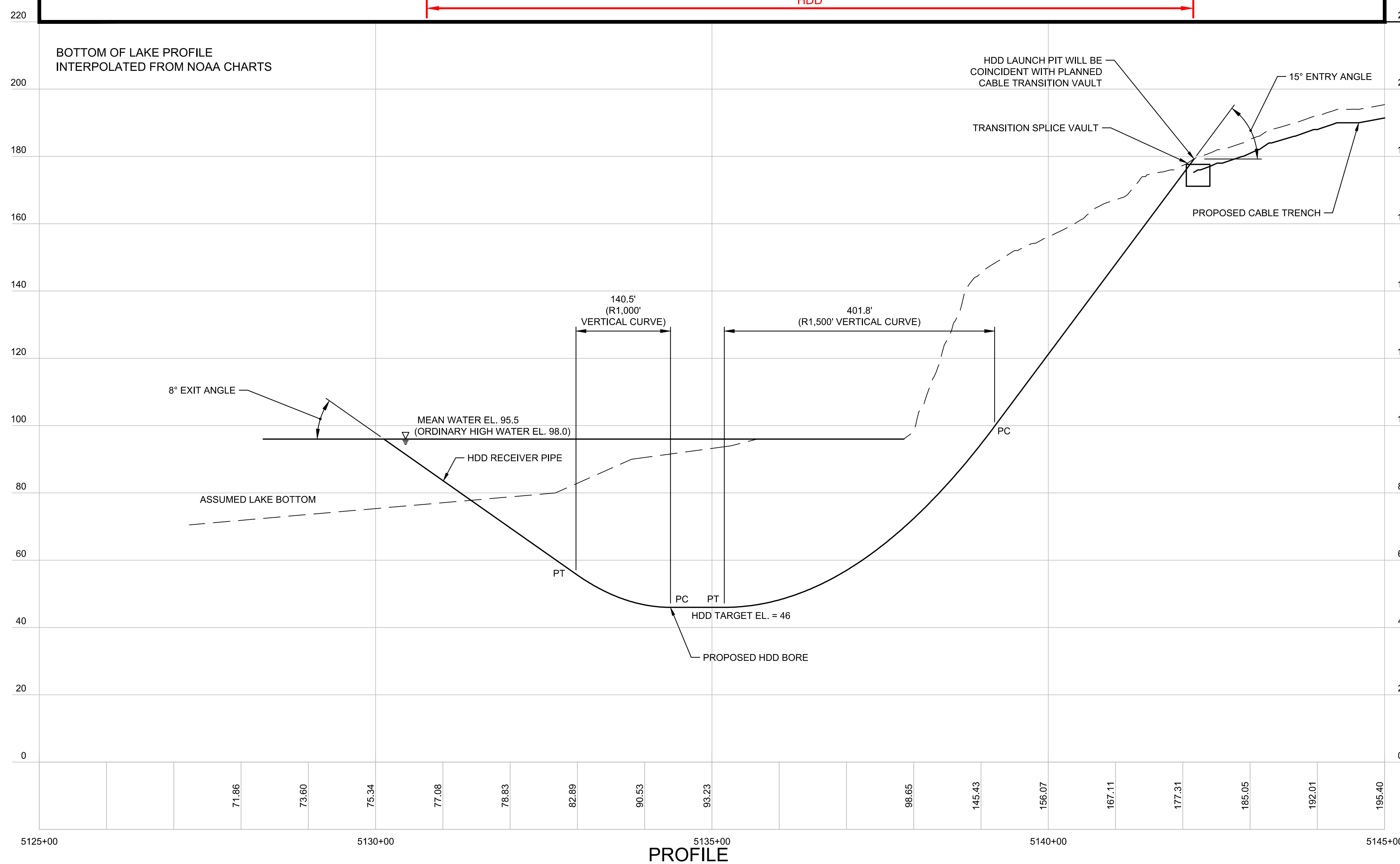
EPSC WORK NOTES

- 1 INSTALL STABILIZED CONSTRUCTION ENTRANCE. SEE TYPICAL DETAIL ON SHEET TD-7.
- 2 DEMARCATATE LIMIT OF DISTURBANCE AND INSTALL PERIMETER CONTROLS IN ACCORDANCE WITH GENERAL EPSC NOTES AND CONSTRUCTION METHOD TYPICAL DETAILS ON SHEETS G-5 AND CM-1 THRU CM-5.
- 3 WETLAND CROSSING. SEE "TYPICAL WETLAND CONSTRUCTION" ON SHEET TD-7.
- 4 OPEN TRENCH EXCAVATION OR AT-CULVERT STREAM CROSSING TO BE COMPLETED IN ACCORDANCE WITH TYPICAL DETAILS ON SHEETS TD-4 AND TD-5.
- 5 REPLACE STREAM CULVERT IN ACCORDANCE WITH TYPICAL DETAILS ON SHEETS TD-3 AND TD-4.
- 6 DEMARCATATE AND AVOID POTENTIAL ROOSTING TREE.
- 7 DEMARCATATE AND AVOID RTE POPULATION.
- 8 IMPLEMENT RTE PLANT PROTECTION PLAN.
- 9 IMPLEMENT RTE ANIMAL PROTECTION PLAN.

CONSTRUCTION METHOD

HDD

REFER TO SHEETS CM-1 THROUGH CM-5 FOR CONSTRUCTION METHOD DETAILS.



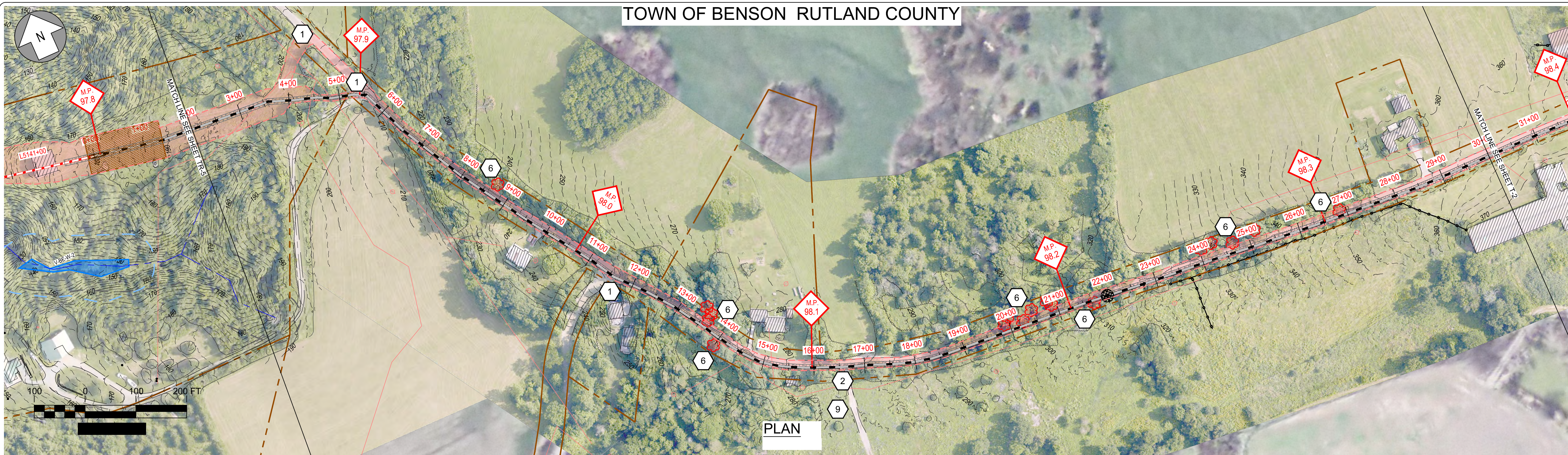
PROFILE

Designed	.
Drawn	.
Checked	.
Approved	.
Scale	AS NOTED

No.	Revision	Date	By	Ck	PE	PE #
A	20% ANR Submission	12/5/14	TRC	AMW		
B	EPSC & PERMITS IFCR	3/8/15	TRC	AMW		
C	ISSUED FOR USE	3/27/15	TRC	AMW		
D	ISSUED FOR PERMITTING	7/24/15	TRC	AMW		


NEW ENGLAND CLEAN POWER LINK
 TDI New England
 Plan & Profile - Lake/Overland Route
 Transition - Benson
 TR-5
 Prepared by:  9/19/14

TOWN OF BENSON RUTLAND COUNTY



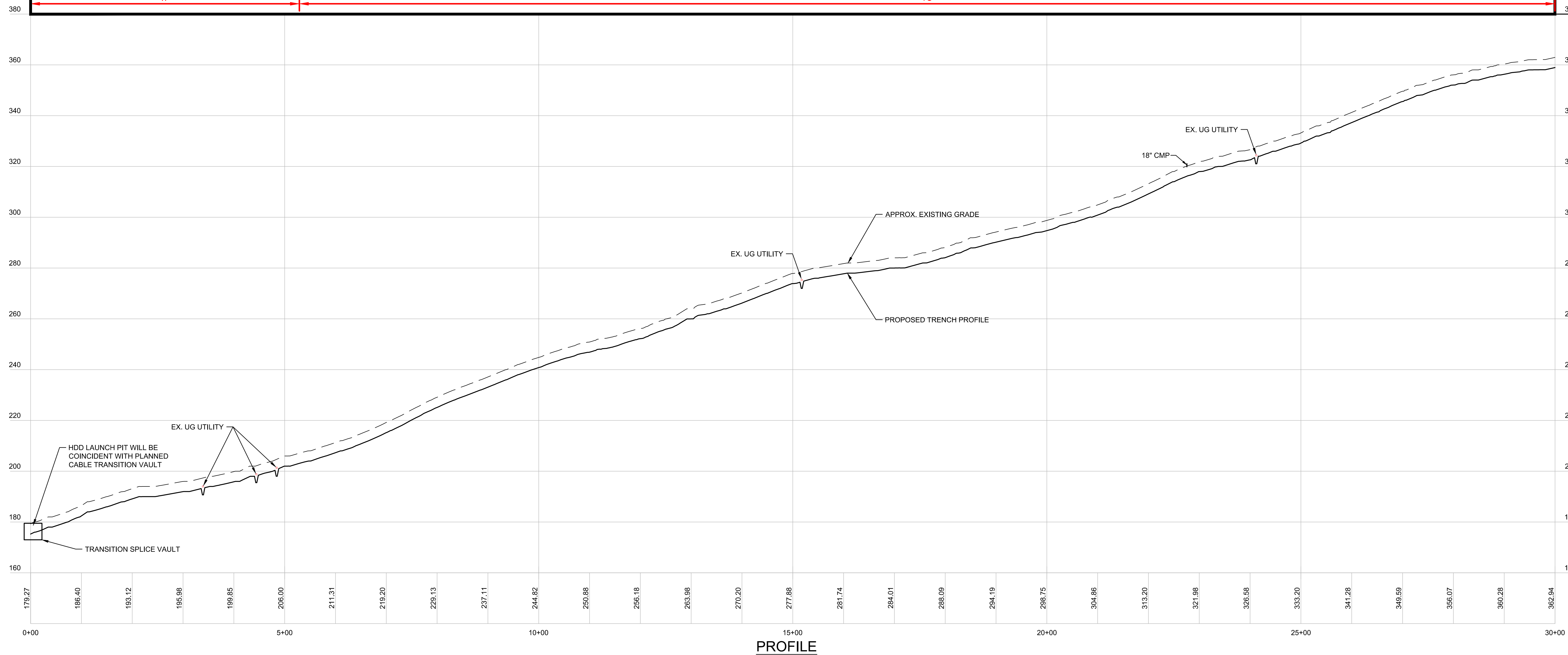
EPSC WORK NOTES

- 1 INSTALL STABILIZED CONSTRUCTION ENTRANCE. SEE TYPICAL DETAIL ON SHEET TD-7.
- 2 DEMARCATÉ LIMIT OF DISTURBANCE AND INSTALL PERIMETER CONTROLS IN ACCORDANCE WITH GENERAL EPSC NOTES AND CONSTRUCTION METHOD TYPICAL DETAILS ON SHEETS G-5 AND CM-1 THRU CM-5.
- 3 WETLAND CROSSING. SEE "TYPICAL WETLAND CONSTRUCTION" ON SHEET TD-7.
- 4 OPEN TRENCH EXCAVATION OR AT-CULVERT STREAM CROSSING TO BE COMPLETED IN ACCORDANCE WITH TYPICAL DETAILS ON SHEETS TD-4 AND TD-5.
- 5 REPLACE STREAM CULVERT IN ACCORDANCE WITH TYPICAL DETAILS ON SHEETS TD-3 AND TD-4.
- 6 DEMARCATÉ AND AVOID POTENTIAL ROOSTING TREE.
- 7 DEMARCATÉ AND AVOID RTE POPULATION.
- 8 IMPLEMENT RTE PLANT PROTECTION PLAN.
- 9 IMPLEMENT RTE ANIMAL PROTECTION PLAN.

PLAN



REFER TO SHEETS CM-1 THROUGH CM-5 FOR CONSTRUCTION METHOD DETAILS.



PROFILE

Designed	.
Drawn	.
Checked	.
Approved	.
Scale	AS NOTED

No.	Revision	Date	By	Ck	PE	PE #
A	20% ANR Submission	12/5/14	TRC	AMW		
B	EPSC & PERMITS IFCR	3/6/15	TRC	AMW		
C	ISSUED FOR USE	3/27/15	TRC	AMW		
D	ISSUED FOR PERMITTING	7/24/15	TRC	AMW		

NEW ENGLAND CLEAN POWER LINK

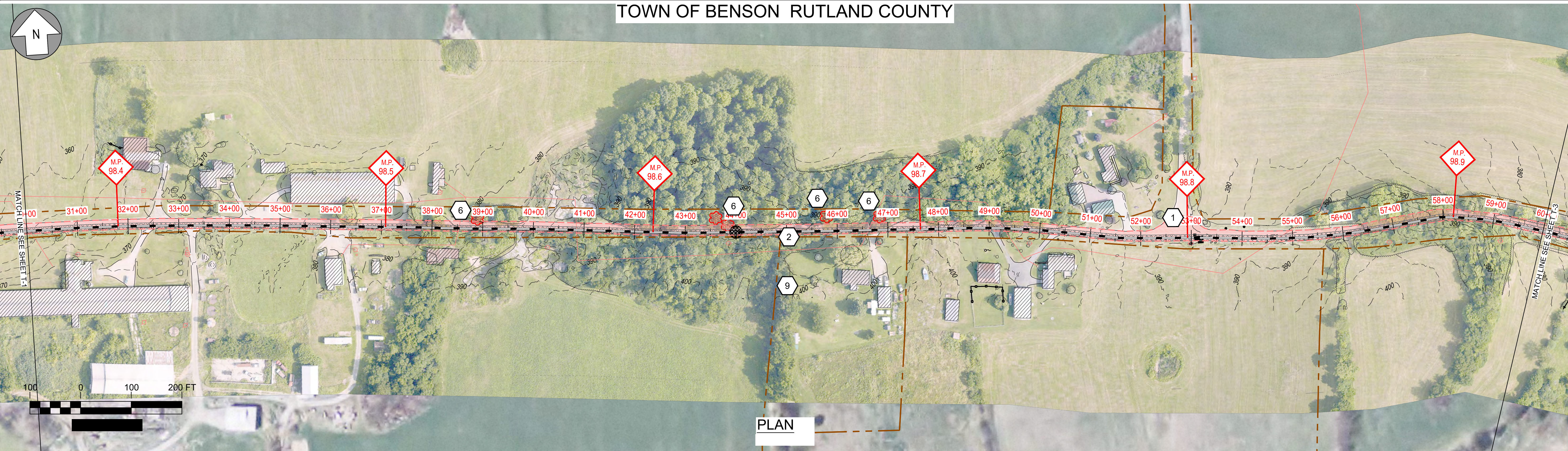
 TDI New England

 Plan & Profile - Overland Route

 T-1

 Prepared by: 9/19/14

TOWN OF BENSON RUTLAND COUNTY

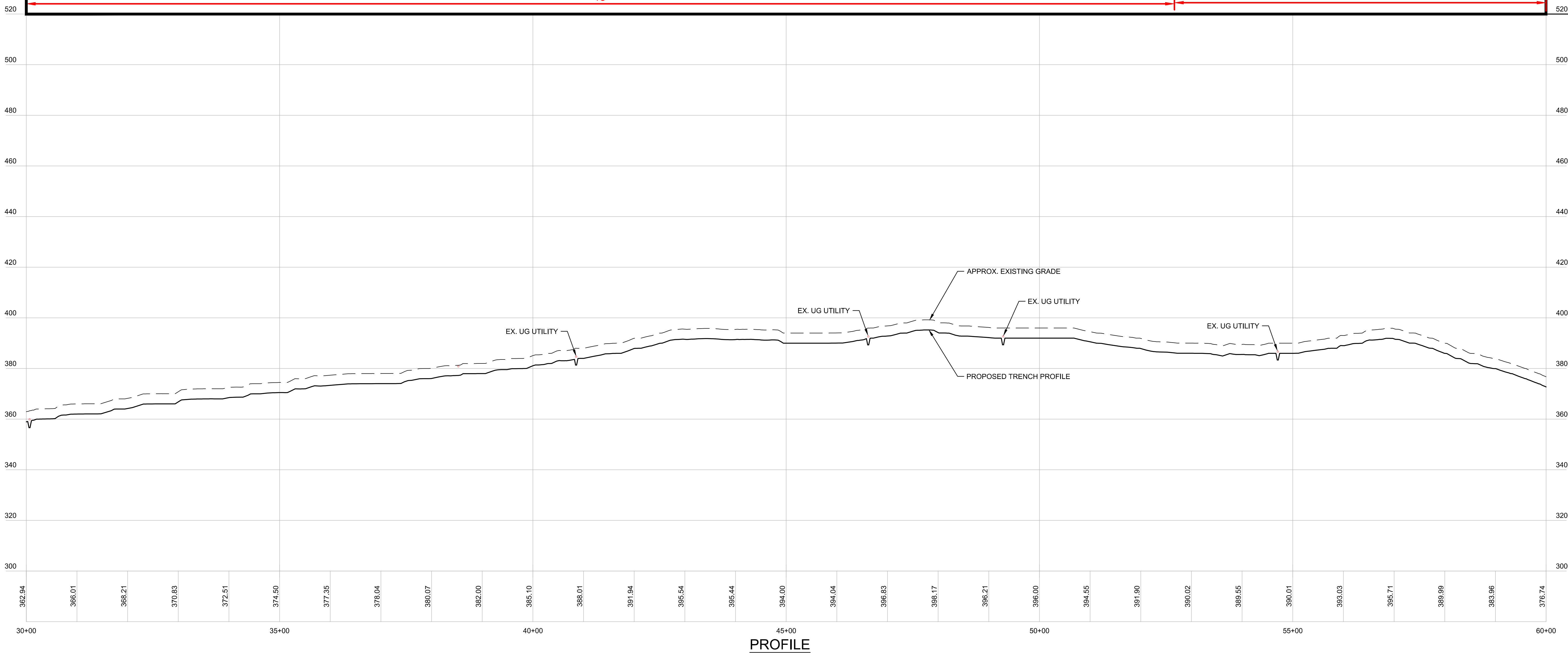


EPSC WORK NOTES

- 1 INSTALL STABILIZED CONSTRUCTION ENTRANCE. SEE TYPICAL DETAIL ON SHEET TD-7.
- 2 DEMARCATÉ LIMIT OF DISTURBANCE AND INSTALL PERIMETER CONTROLS IN ACCORDANCE WITH GENERAL EPSC NOTES AND CONSTRUCTION METHOD TYPICAL DETAILS ON SHEETS G-5 AND CM-1 THRU CM-5.
- 3 WETLAND CROSSING. SEE "TYPICAL WETLAND CONSTRUCTION" ON SHEET TD-7.
- 4 OPEN TRENCH EXCAVATION OR AT-CULVERT STREAM CROSSING TO BE COMPLETED IN ACCORDANCE WITH TYPICAL DETAILS ON SHEETS TD-4 AND TD-5.
- 5 REPLACE STREAM CULVERT IN ACCORDANCE WITH TYPICAL DETAILS ON SHEETS TD-3 AND TD-4.
- 6 DEMARCATÉ AND AVOID POTENTIAL ROOSTING TREE.
- 7 DEMARCATÉ AND AVOID RTE POPULATION.
- 8 IMPLEMENT RTE PLANT PROTECTION PLAN.
- 9 IMPLEMENT RTE ANIMAL PROTECTION PLAN.





REFER TO SHEETS CM-1 THROUGH CM-5 FOR CONSTRUCTION METHOD DETAILS.

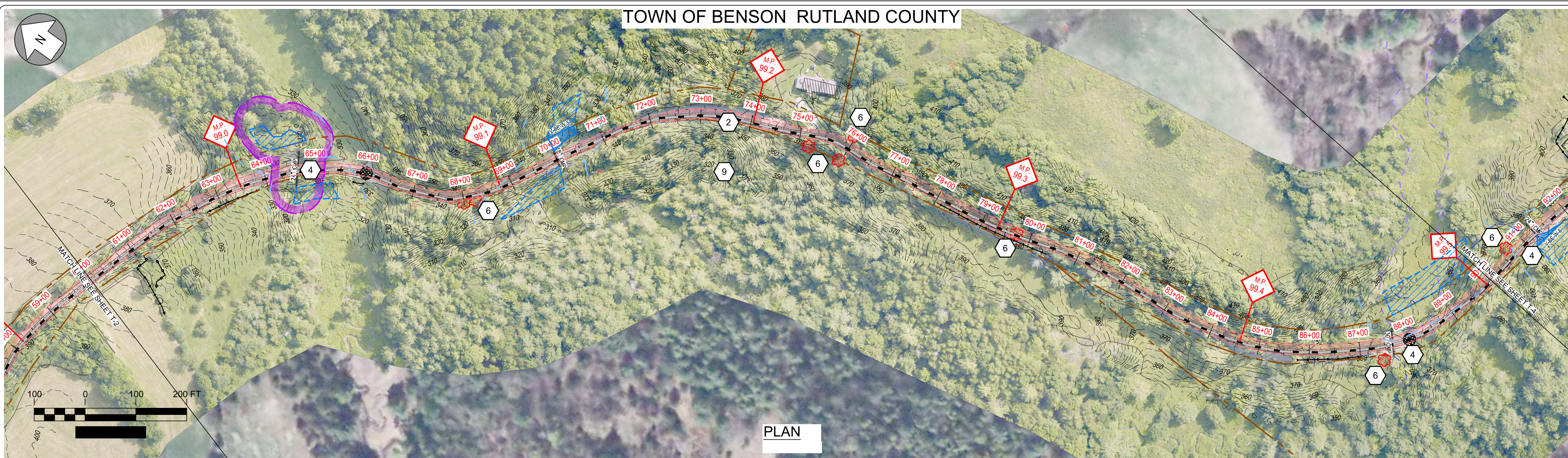


Designed	.
Drawn	.
Checked	.
Approved	.
Scale	AS NOTED

No.	Revision	Date	By	Ck	PE	PE #
A	20% ANR Submission	12/5/14	TRC	AMW		
B	EPSC & PERMITS IFCR	3/6/15	TRC	AMW		
C	ISSUED FOR USE	3/27/15	TRC	AMW		
D	ISSUED FOR PERMITTING	7/24/15	TRC	AMW		


NEW ENGLAND CLEAN POWER LINK
 TDI New England
 Plan & Profile - Overland Route
 T-2
 Prepared by:  9/19/14

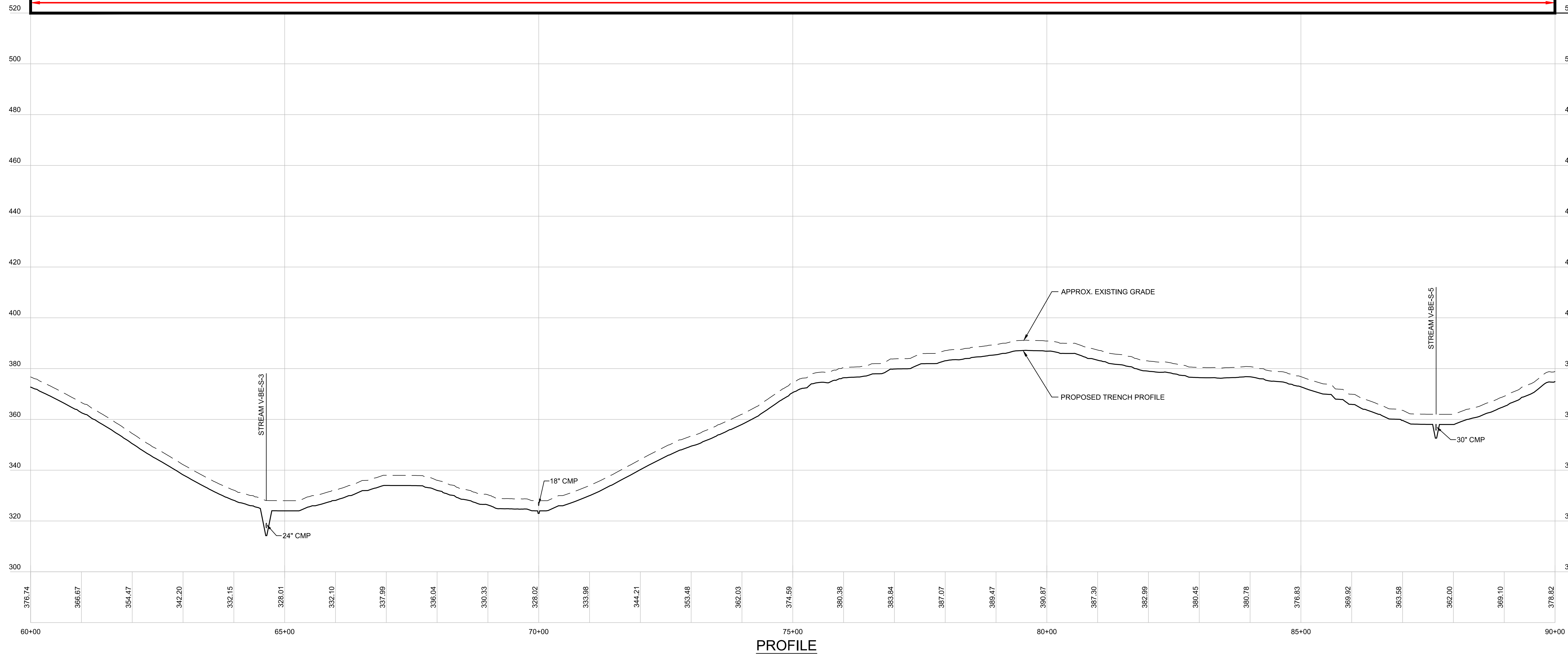
TOWN OF BENSON RUTLAND COUNTY



- 1 INSTALL STABILIZED CONSTRUCTION ENTRANCE. SEE TYPICAL DETAIL ON SHEET TD-7.
- 2 DEMARCATÉ LIMIT OF DISTURBANCE AND INSTALL PERIMETER CONTROLS IN ACCORDANCE WITH GENERAL EPSC NOTES AND CONSTRUCTION METHOD TYPICAL DETAILS ON SHEETS G-5 AND CM-1 THRU CM-5.
- 3 WETLAND CROSSING. SEE "TYPICAL WETLAND CONSTRUCTION" ON SHEET TD-7.
- 4 OPEN TRENCH EXCAVATION OR AT-CULVERT STREAM CROSSING TO BE COMPLETED IN ACCORDANCE WITH TYPICAL DETAILS ON SHEETS TD-4 AND TD-5.
- 5 REPLACE STREAM CULVERT IN ACCORDANCE WITH TYPICAL DETAILS ON SHEETS TD-3 AND TD-4.
- 6 DEMARCATÉ AND AVOID POTENTIAL ROOSTING TREE.
- 7 DEMARCATÉ AND AVOID RTE POPULATION.
- 8 IMPLEMENT RTE PLANT PROTECTION PLAN.
- 9 IMPLEMENT RTE ANIMAL PROTECTION PLAN.



CONSTRUCTION METHOD
1A

REFER TO SHEETS CM-1 THROUGH CM-5 FOR CONSTRUCTION METHOD DETAILS.

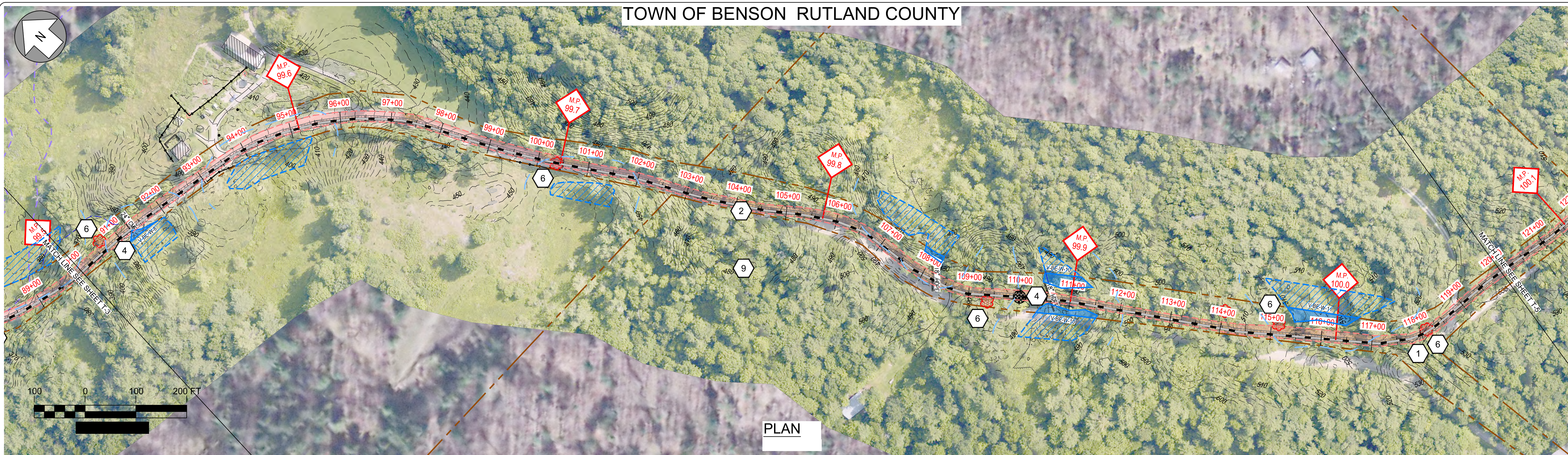


Designed	.
Drawn	.
Checked	.
Approved	.
Scale	AS NOTED

No.	Revision	Date	By	Ck	PE	PE #
A	20% ANR Submission	12/5/14	TRC	AMW		
B	EPSC & PERMITS IFCR	3/6/15	TRC	AMW		
C	ISSUED FOR USE	3/27/15	TRC	AMW		
D	ISSUED FOR PERMITTING	7/24/15	TRC	AMW		


NEW ENGLAND CLEAN POWER LINK
 TDI New England
 Plan & Profile - Overland Route
 T-3
 Prepared by:  9/19/14

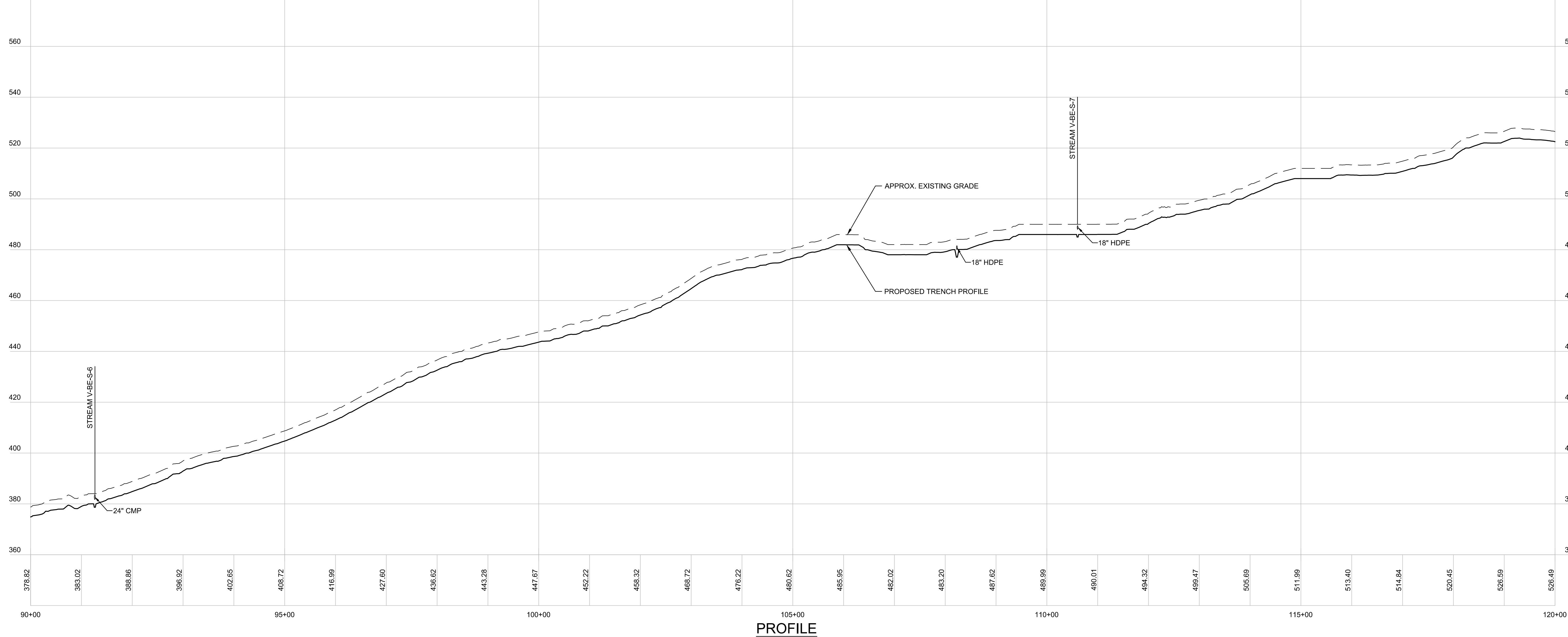
TOWN OF BENSON RUTLAND COUNTY



- 1 INSTALL STABILIZED CONSTRUCTION ENTRANCE. SEE TYPICAL DETAIL ON SHEET TD-7.
- 2 DEMARCATÉ LIMIT OF DISTURBANCE AND INSTALL PERIMETER CONTROLS IN ACCORDANCE WITH GENERAL EPSC NOTES AND CONSTRUCTION METHOD TYPICAL DETAILS ON SHEETS G-5 AND CM-1 THRU CM-5.
- 3 WETLAND CROSSING. SEE "TYPICAL WETLAND CONSTRUCTION" ON SHEET TD-7.
- 4 OPEN TRENCH EXCAVATION OR AT-CULVERT STREAM CROSSING TO BE COMPLETED IN ACCORDANCE WITH TYPICAL DETAILS ON SHEETS TD-4 AND TD-5.
- 5 REPLACE STREAM CULVERT IN ACCORDANCE WITH TYPICAL DETAILS ON SHEETS TD-3 AND TD-4.
- 6 DEMARCATÉ AND AVOID POTENTIAL ROOSTING TREE.
- 7 DEMARCATÉ AND AVOID RTE POPULATION.
- 8 IMPLEMENT RTE PLANT PROTECTION PLAN.
- 9 IMPLEMENT RTE ANIMAL PROTECTION PLAN.





REFER TO SHEETS CM-1 THROUGH CM-5 FOR CONSTRUCTION METHOD DETAILS.

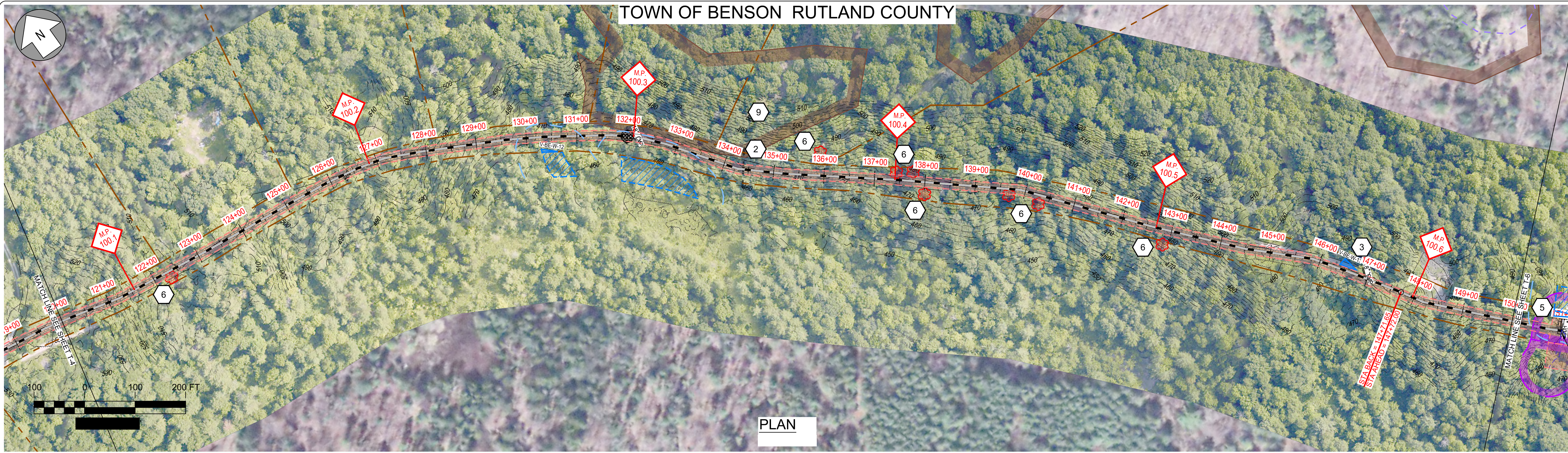


Designed	.
Drawn	.
Checked	.
Approved	.
Scale	AS NOTED

No.	Revision	Date	By	Ck	PE	PE #
A	20% ANR Submission	12/5/14	TRC	AMW		
B	EPSC & PERMITS IFCR	3/6/15	TRC	AMW		
C	ISSUED FOR USE	3/27/15	TRC	AMW		
D	ISSUED FOR PERMITTING	7/24/15	TRC	AMW		


NEW ENGLAND CLEAN POWER LINK
 TDI New England
 Plan & Profile - Overland Route
 T-4
 Prepared by:  9/19/14

TOWN OF BENSON RUTLAND COUNTY

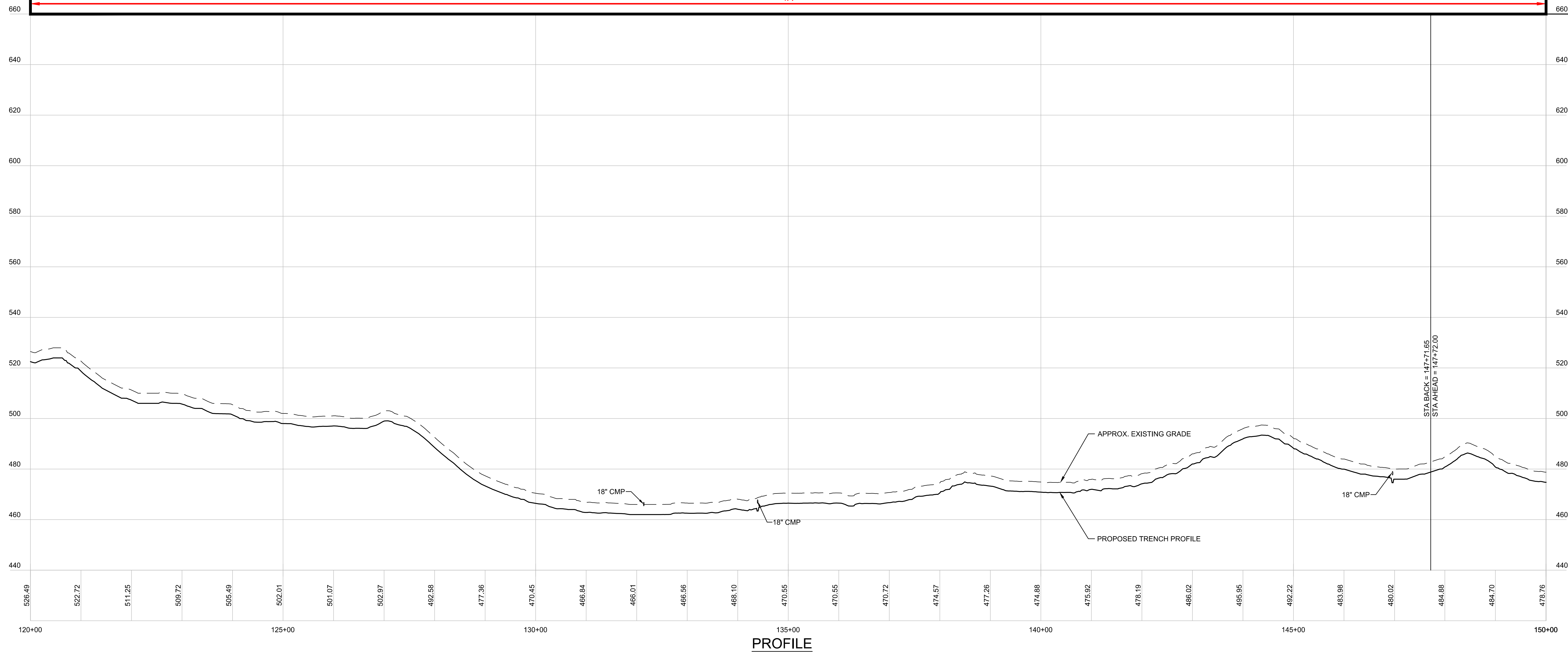


EPSC WORK NOTES

- 1 INSTALL STABILIZED CONSTRUCTION ENTRANCE. SEE TYPICAL DETAIL ON SHEET TD-7.
- 2 DEMARCATÉ LIMIT OF DISTURBANCE AND INSTALL PERIMETER CONTROLS IN ACCORDANCE WITH GENERAL EPSC NOTES AND CONSTRUCTION METHOD TYPICAL DETAILS ON SHEETS G-5 AND CM-1 THRU CM-5.
- 3 WETLAND CROSSING. SEE "TYPICAL WETLAND CONSTRUCTION" ON SHEET TD-7.
- 4 OPEN TRENCH EXCAVATION OR AT-CULVERT STREAM CROSSING TO BE COMPLETED IN ACCORDANCE WITH TYPICAL DETAILS ON SHEETS TD-4 AND TD-5.
- 5 REPLACE STREAM CULVERT IN ACCORDANCE WITH TYPICAL DETAILS ON SHEETS TD-3 AND TD-4.
- 6 DEMARCATÉ AND AVOID POTENTIAL ROOSTING TREE.
- 7 DEMARCATÉ AND AVOID RTE POPULATION.
- 8 IMPLEMENT RTE PLANT PROTECTION PLAN.
- 9 IMPLEMENT RTE ANIMAL PROTECTION PLAN.



CONSTRUCTION METHOD
1A

REFER TO SHEETS CM-1 THROUGH CM-5 FOR CONSTRUCTION METHOD DETAILS.

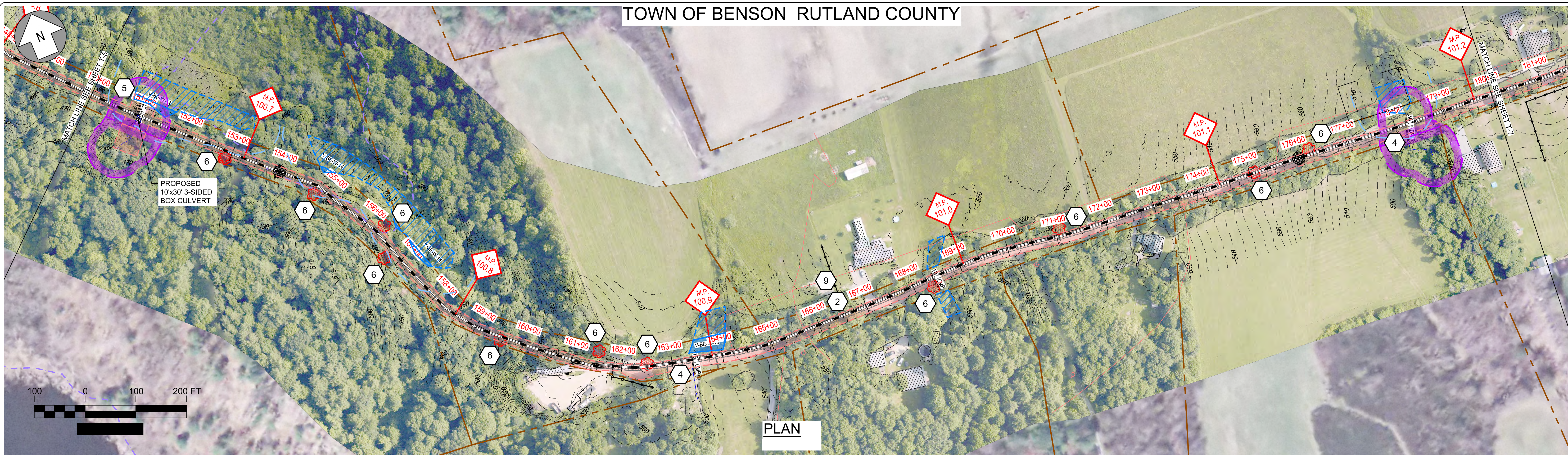


Designed	.
Drawn	.
Checked	.
Approved	.
Scale	AS NOTED

No.	Revision	Date	By	Ck	PE	PE #
A	20% ANR Submission	12/5/14	TRC	AMW		
B	EPSC & PERMITS IFCR	3/6/15	TRC	AMW		
C	ISSUED FOR USE	3/27/15	TRC	AMW		
D	ISSUED FOR PERMITTING	7/24/15	TRC	AMW		


NEW ENGLAND CLEAN POWER LINK
 TDI New England
 Plan & Profile - Overland Route
 T-5
 Prepared by:  9/19/14

TOWN OF BENSON RUTLAND COUNTY



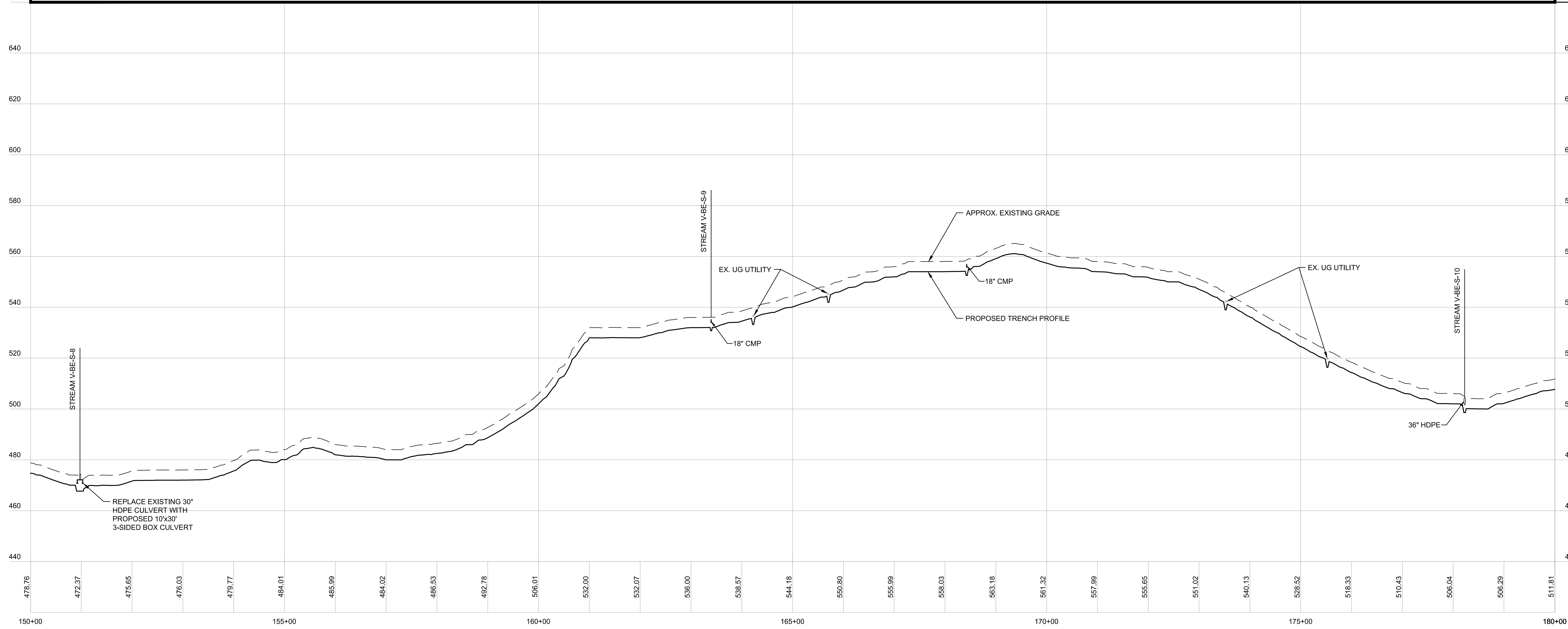
EPSC WORK NOTES

- 1 INSTALL STABILIZED CONSTRUCTION ENTRANCE. SEE TYPICAL DETAIL ON SHEET TD-7.
- 2 DEMARCATATE LIMIT OF DISTURBANCE AND INSTALL PERIMETER CONTROLS IN ACCORDANCE WITH GENERAL EPSC NOTES AND CONSTRUCTION METHOD TYPICAL DETAILS ON SHEETS G-5 AND CM-1 THRU CM-5.
- 3 WETLAND CROSSING. SEE "TYPICAL WETLAND CONSTRUCTION" ON SHEET TD-7.
- 4 OPEN TRENCH EXCAVATION OR AT-CULVERT STREAM CROSSING TO BE COMPLETED IN ACCORDANCE WITH TYPICAL DETAILS ON SHEETS TD-4 AND TD-5.
- 5 REPLACE STREAM CULVERT IN ACCORDANCE WITH TYPICAL DETAILS ON SHEETS TD-3 AND TD-4.
- 6 DEMARCATATE AND AVOID POTENTIAL ROOSTING TREE.
- 7 DEMARCATATE AND AVOID RTE POPULATION.
- 8 IMPLEMENT RTE PLANT PROTECTION PLAN.
- 9 IMPLEMENT RTE ANIMAL PROTECTION PLAN.

CONSTRUCTION METHOD



REFER TO SHEETS CM-1 THROUGH CM-5 FOR CONSTRUCTION METHOD DETAILS.



PROFILE

Designed	.
Drawn	.
Checked	.
Approved	.
Scale	AS NOTED

No.	Revision	Date	By	Ck	PE	PE #
B	EPSC & PERMITS IFCR	3/6/15	TRC	AMW		
C	ISSUED FOR USE	3/27/15	TRC	AMW		
D	REVISED CULVERT	6/4/15	TRC	AMW		
E	ISSUED FOR PERMITTING	7/24/15	TRC	AMW		

NEW ENGLAND CLEAN POWER LINK

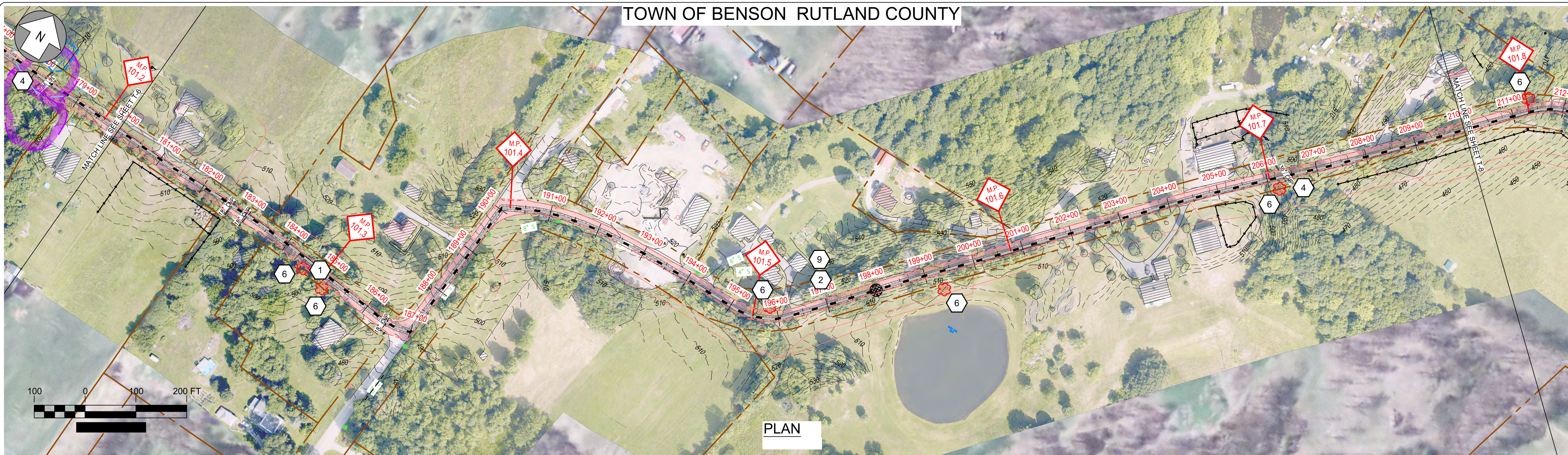
 TDI New England

 Plan & Profile - Overland Route

 T-6

 Prepared by: 9/19/14

TOWN OF BENSON RUTLAND COUNTY



EPSC WORK NOTES

- 1 INSTALL STABILIZED CONSTRUCTION ENTRANCE. SEE TYPICAL DETAIL ON SHEET TD-7.
- 2 DEMARCATATE LIMIT OF DISTURBANCE AND INSTALL PERIMETER CONTROLS IN ACCORDANCE WITH GENERAL EPSC NOTES AND CONSTRUCTION METHOD TYPICAL DETAILS ON SHEETS G-5 AND CM-1 THRU CM-5.
- 3 WETLAND CROSSING. SEE "TYPICAL WETLAND CONSTRUCTION" ON SHEET TD-7.
- 4 OPEN TRENCH EXCAVATION OR AT-CULVERT STREAM CROSSING TO BE COMPLETED IN ACCORDANCE WITH TYPICAL DETAILS ON SHEETS TD-4 AND TD-5.
- 5 REPLACE STREAM CULVERT IN ACCORDANCE WITH TYPICAL DETAILS ON SHEETS TD-3 AND TD-4.
- 6 DEMARCATATE AND AVOID POTENTIAL ROOSTING TREE.
- 7 DEMARCATATE AND AVOID RTE POPULATION.
- 8 IMPLEMENT RTE PLANT PROTECTION PLAN.
- 9 IMPLEMENT RTE ANIMAL PROTECTION PLAN.

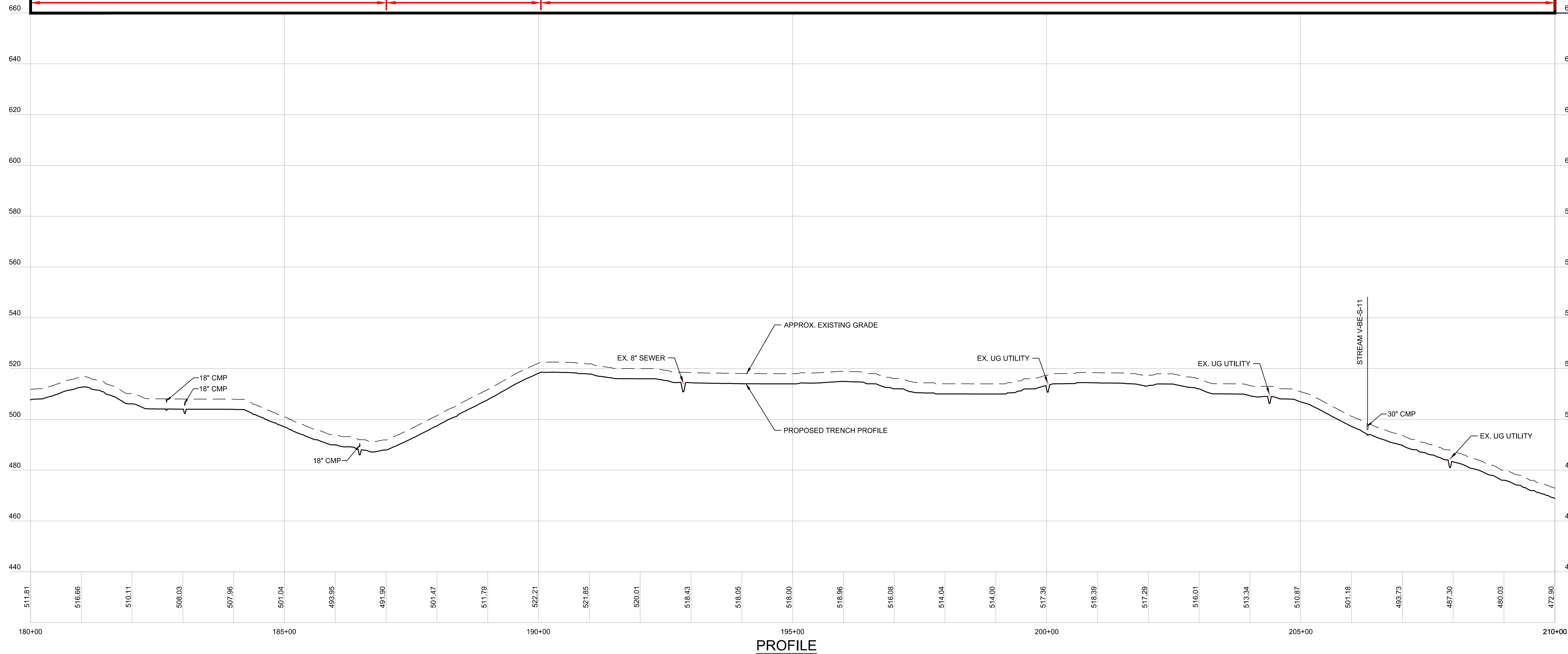
CONSTRUCTION METHOD

1C

2B

2A

REFER TO SHEETS CM-1 THROUGH CM-5 FOR CONSTRUCTION METHOD DETAILS.



Designed	.
Drawn	.
Checked	.
Approved	.
Scale	AS NOTED

No.	Revision	Date	By	Ck	PE	PE #
A	20% ANR Submission	12/5/14	TRC	AMW		
B	EPSC & PERMITS IFCR	3/6/15	TRC	AMW		
C	ISSUED FOR USE	3/27/15	TRC	AMW		
D	ISSUED FOR PERMITTING	7/24/15	TRC	AMW		

NEW ENGLAND CLEAN POWER LINK

 TDI New England

 Plan & Profile - Overland Route

 T-7

 Prepared by: 9/19/14

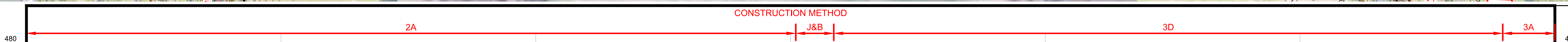
TOWN OF BENSON RUTLAND COUNTY



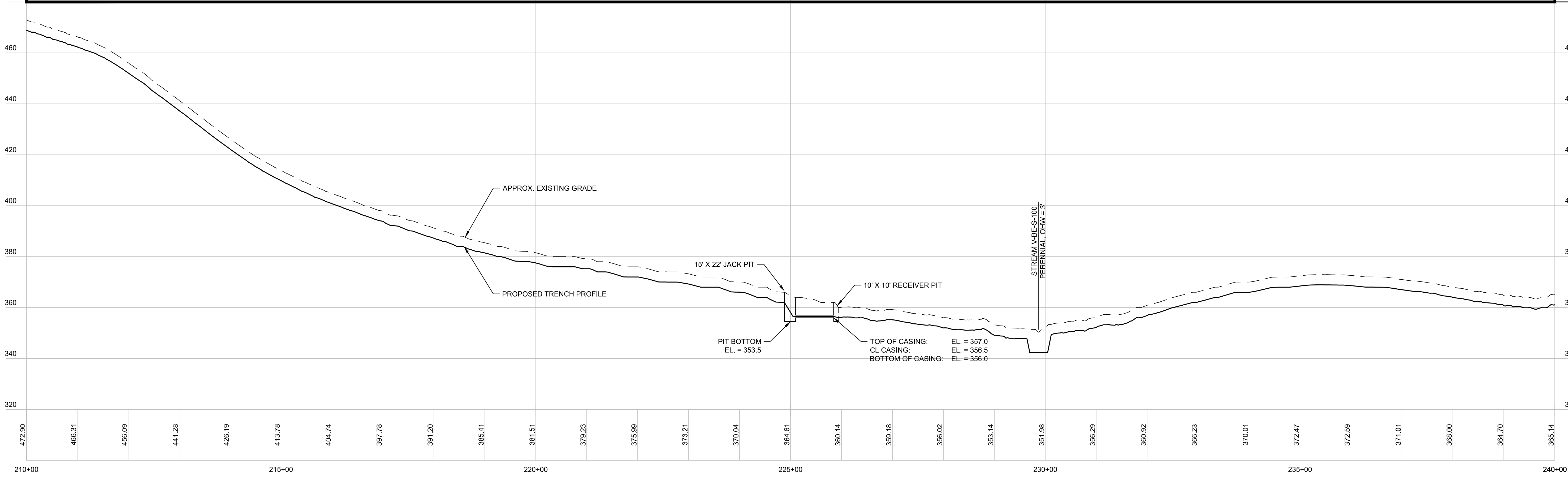
PLAN

EPSC WORK NOTES

- 1 INSTALL STABILIZED CONSTRUCTION ENTRANCE. SEE TYPICAL DETAIL ON SHEET TD-7.
- 2 DEMARCATÉ LIMIT OF DISTURBANCE AND INSTALL PERIMETER CONTROLS IN ACCORDANCE WITH GENERAL EPSC NOTES AND CONSTRUCTION METHOD TYPICAL DETAILS ON SHEETS G-5 AND CM-1 THRU CM-5.
- 3 WETLAND CROSSING. SEE "TYPICAL WETLAND CONSTRUCTION" ON SHEET TD-7.
- 4 OPEN TRENCH EXCAVATION OR AT-CULVERT STREAM CROSSING TO BE COMPLETED IN ACCORDANCE WITH TYPICAL DETAILS ON SHEETS TD-4 AND TD-5.
- 5 REPLACE STREAM CULVERT IN ACCORDANCE WITH TYPICAL DETAILS ON SHEETS TD-3 AND TD-4.
- 6 DEMARCATÉ AND AVOID POTENTIAL ROOSTING TREE.
- 7 DEMARCATÉ AND AVOID RTE POPULATION.
- 8 IMPLEMENT RTE PLANT PROTECTION PLAN.
- 9 IMPLEMENT RTE ANIMAL PROTECTION PLAN.



REFER TO SHEETS CM-1 THROUGH CM-5 FOR CONSTRUCTION METHOD DETAILS.



PROFILE

Designed	.
Drawn	.
Checked	.
Approved	.
Scale	AS NOTED

No.	Revision	Date	By	Ck	PE	PE #
A	20% ANR Submission	12/5/14	TRC	AMW		
B	EPSC & PERMITS IFCR	3/6/15	TRC	AMW		
C	ISSUED FOR USE	3/27/15	TRC	AMW		
D	ISSUED FOR PERMITTING	7/24/15	TRC	AMW		

NEW ENGLAND CLEAN POWER LINK

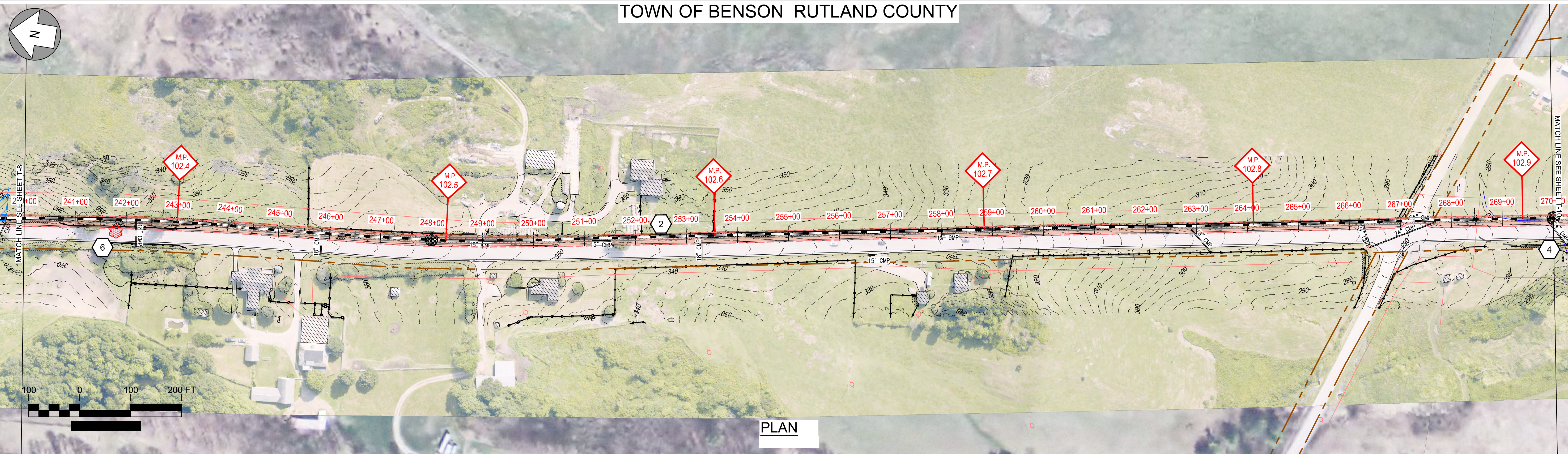
 TDI New England

 Plan & Profile - Overland Route

 T-8

 Prepared by: 9/19/14

TOWN OF BENSON RUTLAND COUNTY



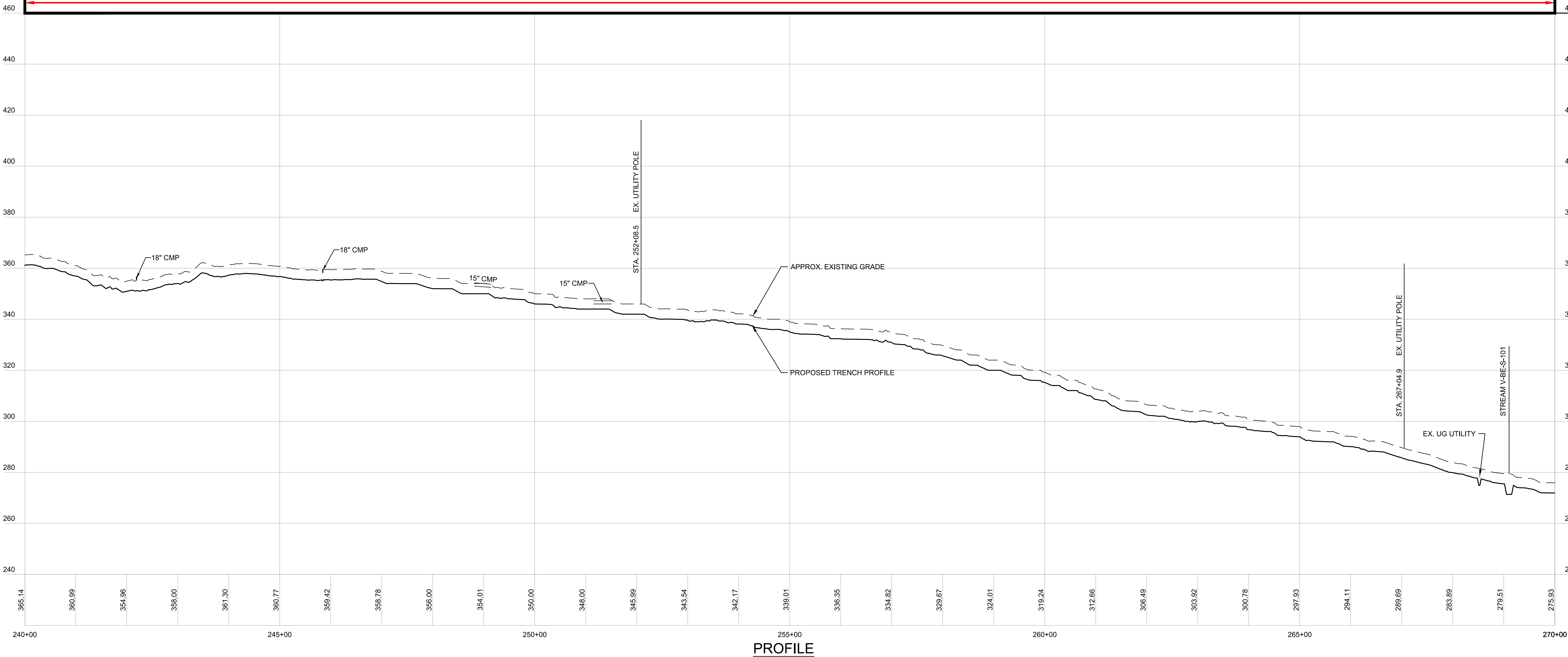
PLAN

EPSC WORK NOTES

- 1 INSTALL STABILIZED CONSTRUCTION ENTRANCE. SEE TYPICAL DETAIL ON SHEET TD-7.
- 2 DEMARCATATE LIMIT OF DISTURBANCE AND INSTALL PERIMETER CONTROLS IN ACCORDANCE WITH GENERAL EPSC NOTES AND CONSTRUCTION METHOD TYPICAL DETAILS ON SHEETS G-5 AND CM-1 THRU CM-5.
- 3 WETLAND CROSSING. SEE "TYPICAL WETLAND CONSTRUCTION" ON SHEET TD-7.
- 4 OPEN TRENCH EXCAVATION OR AT-CULVERT STREAM CROSSING TO BE COMPLETED IN ACCORDANCE WITH TYPICAL DETAILS ON SHEETS TD-4 AND TD-5.
- 5 REPLACE STREAM CULVERT IN ACCORDANCE WITH TYPICAL DETAILS ON SHEETS TD-3 AND TD-4.
- 6 DEMARCATATE AND AVOID POTENTIAL ROOSTING TREE.
- 7 DEMARCATATE AND AVOID RTE POPULATION.
- 8 IMPLEMENT RTE PLANT PROTECTION PLAN.
- 9 IMPLEMENT RTE ANIMAL PROTECTION PLAN.

CONSTRUCTION METHOD
3A

REFER TO SHEETS CM-1 THROUGH CM-5 FOR CONSTRUCTION METHOD DETAILS.



PROFILE

Designed	.
Drawn	.
Checked	.
Approved	.
Scale	AS NOTED

No.	Revision	Date	By	Ck	PE	PE #
A	20% ANR Submission	12/5/14	TRC	AMW		
B	EPSC & PERMITS IFCR	3/6/15	TRC	AMW		
C	ISSUED FOR USE	3/27/15	TRC	AMW		
D	ISSUED FOR PERMITTING	7/24/15	TRC	AMW		

NEW ENGLAND CLEAN POWER LINK

 TDI New England

 Plan & Profile - Overland Route

 T-9

 Prepared by: 9/19/14